

This is an explanation-less graphic walkthrough document for *Fourbyfourian Quarryin'*. It includes diagrams of all possible hard-mode solutions. No commands are listed to achieve the solutions, though hopefully they will be pretty evident. Spoilers are ahead.

- [Ministry of Unity map](#)

Initial stalemates

- [King and Bishop vs. King Stalemate](#)
- [King and Knight vs. King Stalemate](#)

Initial checkmates

- [King and Bishop vs. King and Bishop Checkmate](#)
- [King and Bishop vs. King and Knight Checkmate](#)
- [King and Knight vs. King and Bishop Checkmate](#)
- [King and Knight vs. King and Knight Checkmate](#)

Later stalemates

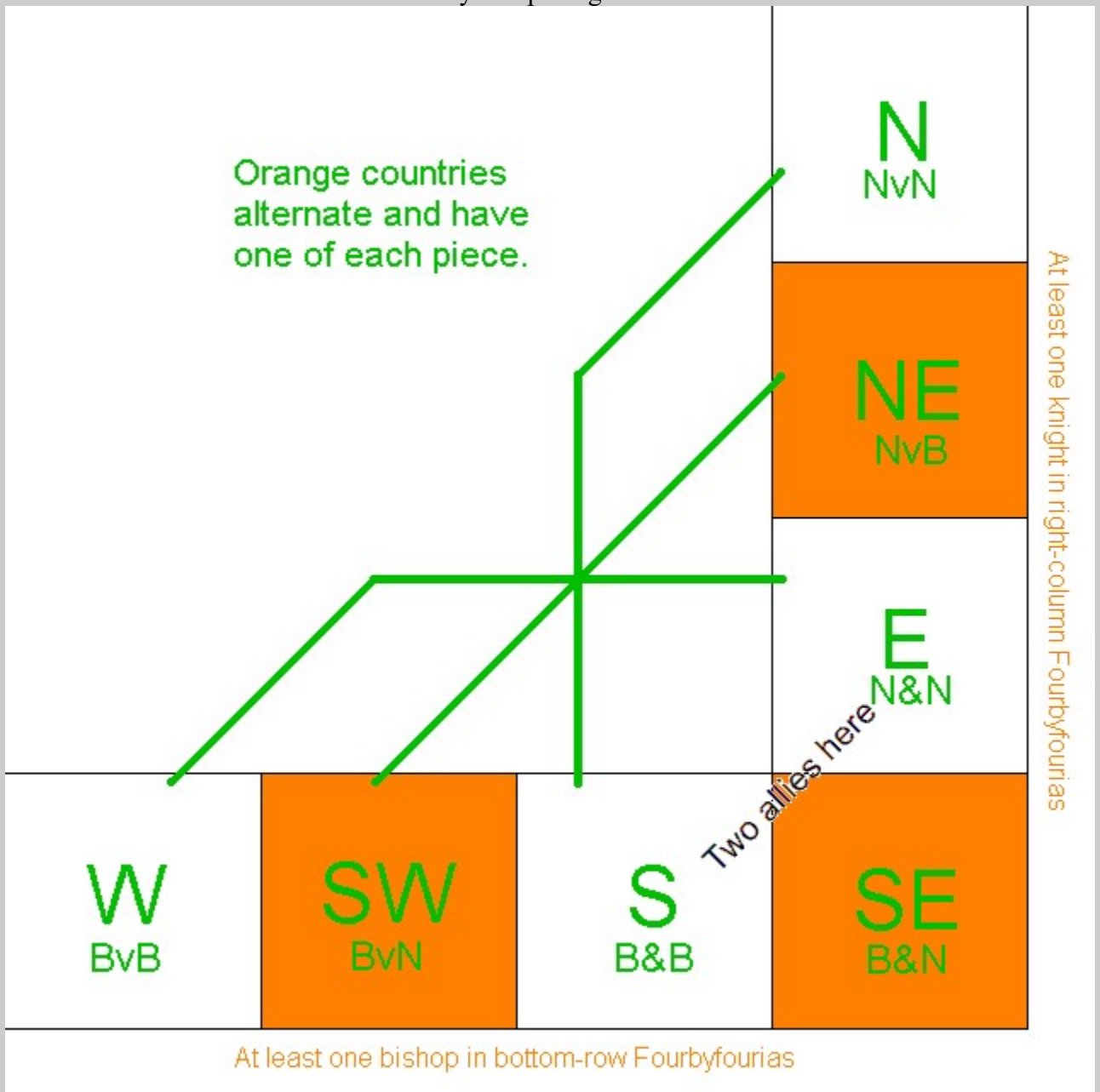
- [Two Bishops Stalemates](#)
- [Bishop and Knight Stalemates](#)
- [Two Knights Stalemates](#)

Later checkmates

- [Two Bishops Checkmates](#)
- [Bishop and Knight Checkmates](#)
- [Two Knights Checkmates](#)

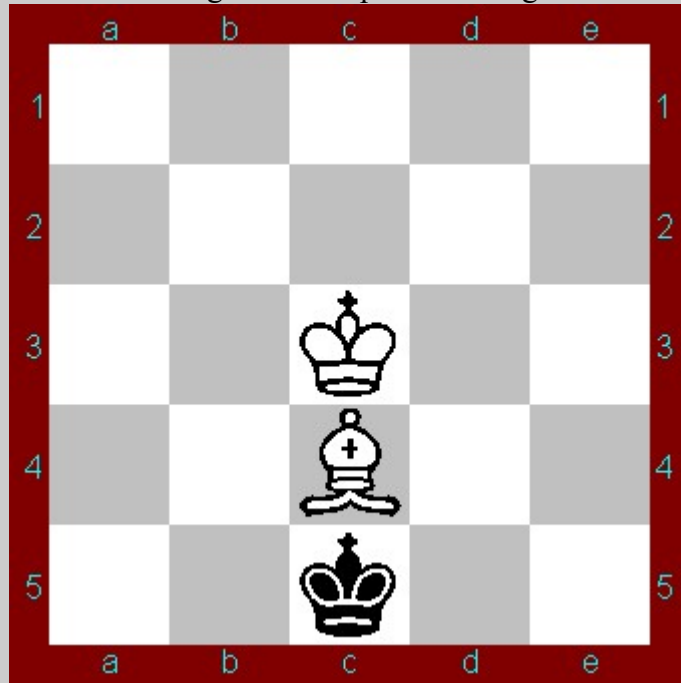
Ministry of Unity Map

This is an approximate rendition of the Ministry of Unity map. I placed it here so nothing is spoiled immediately on opening the document.

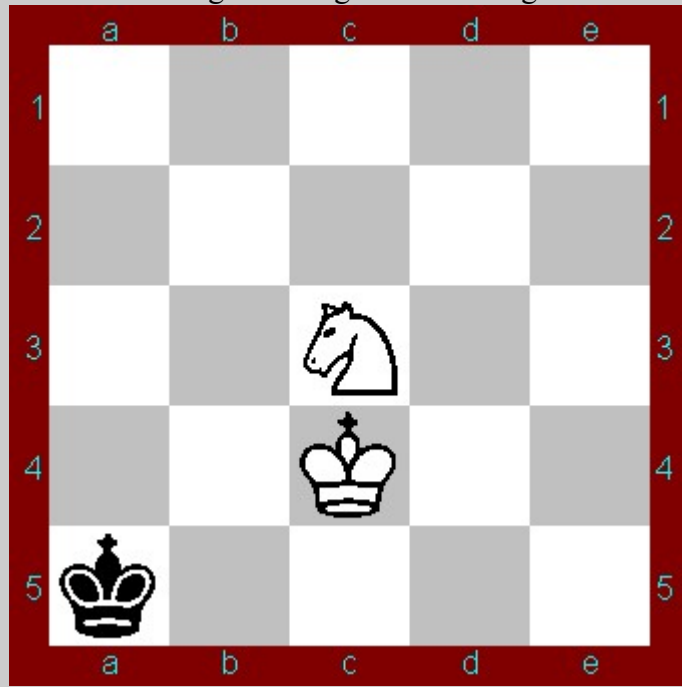


Stalemates

King and Bishop versus King

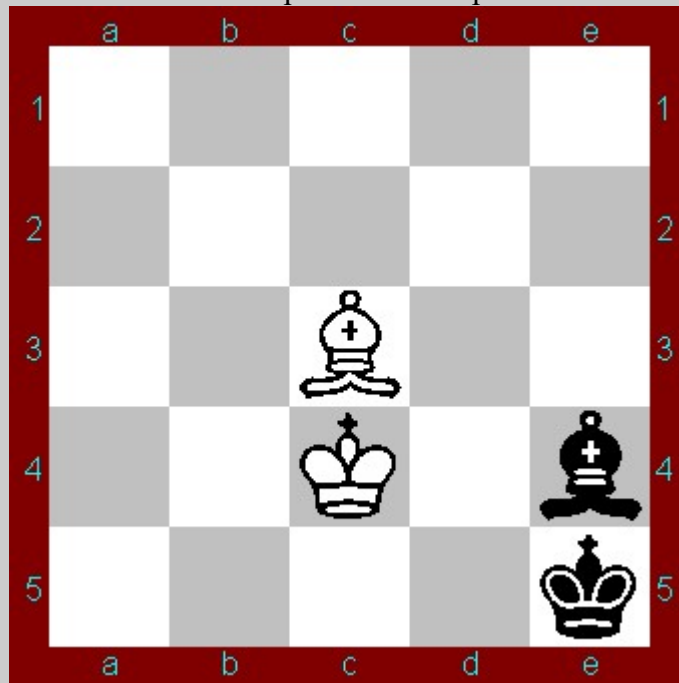


King and Knight versus King

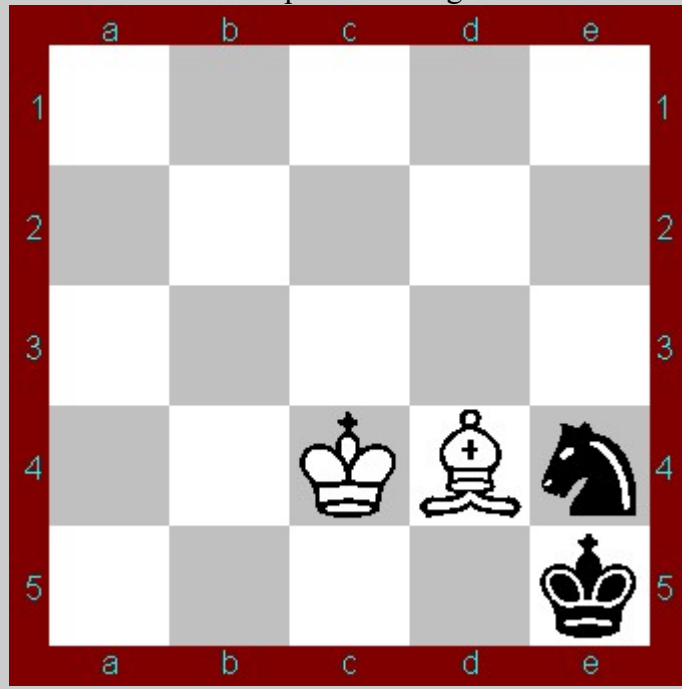


Checkmates with the traitors' help

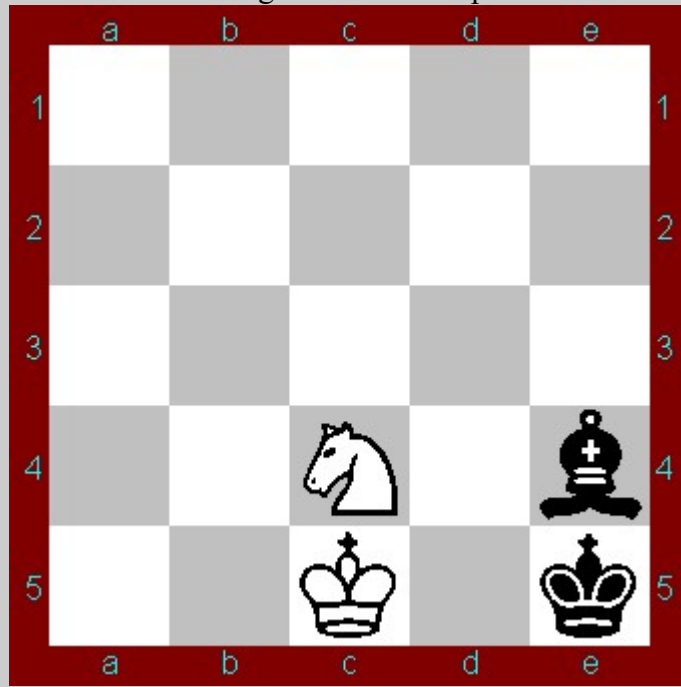
Bishop versus Bishop



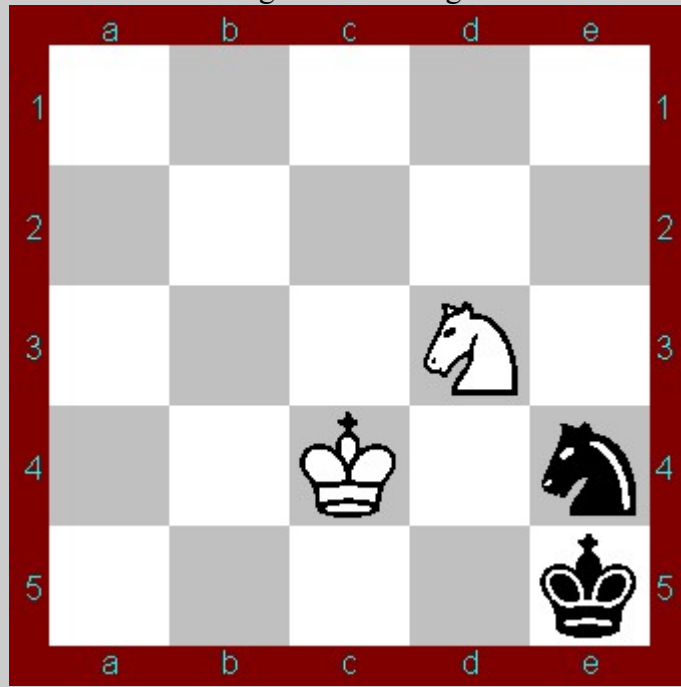
Bishop versus Knight



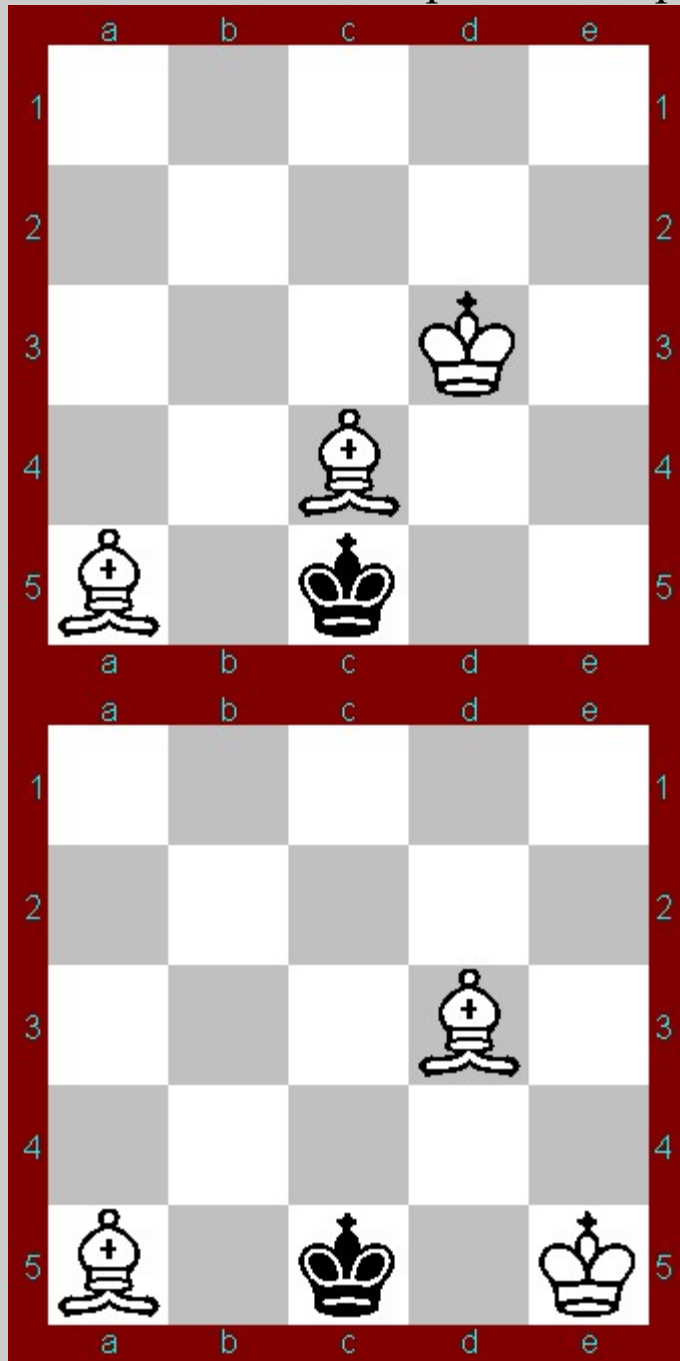
Knight versus Bishop

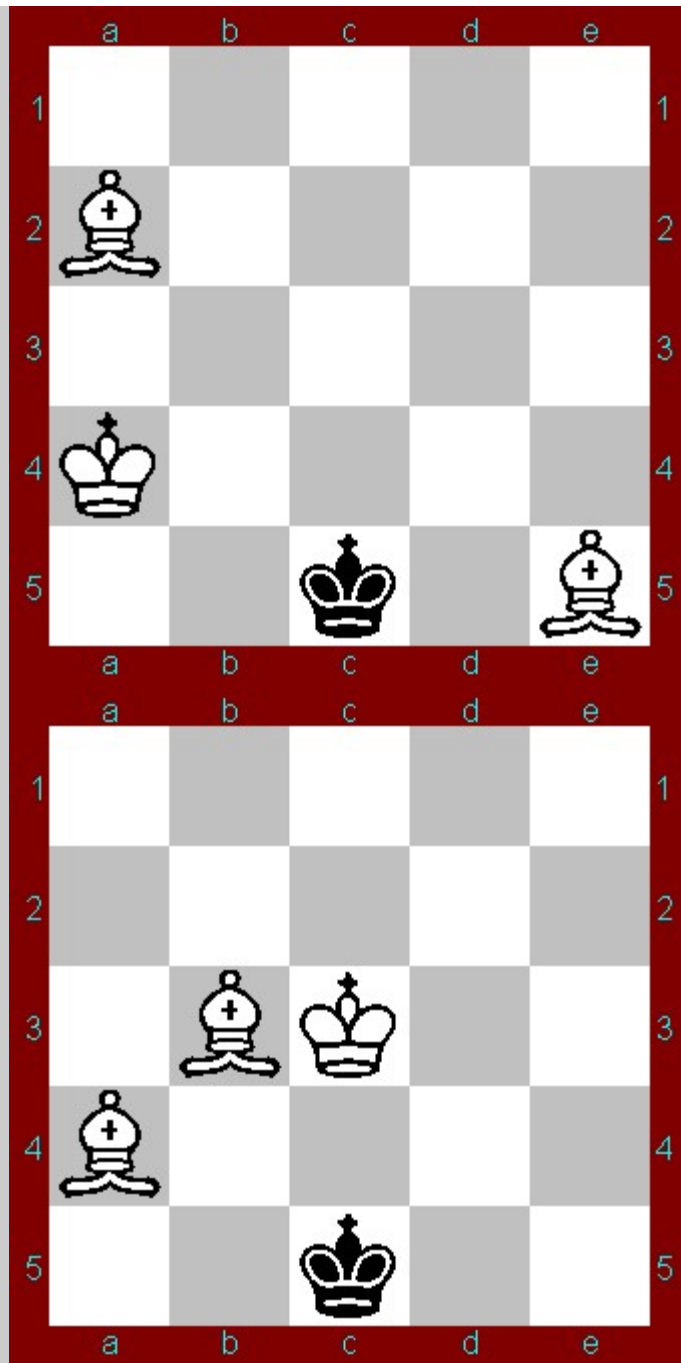


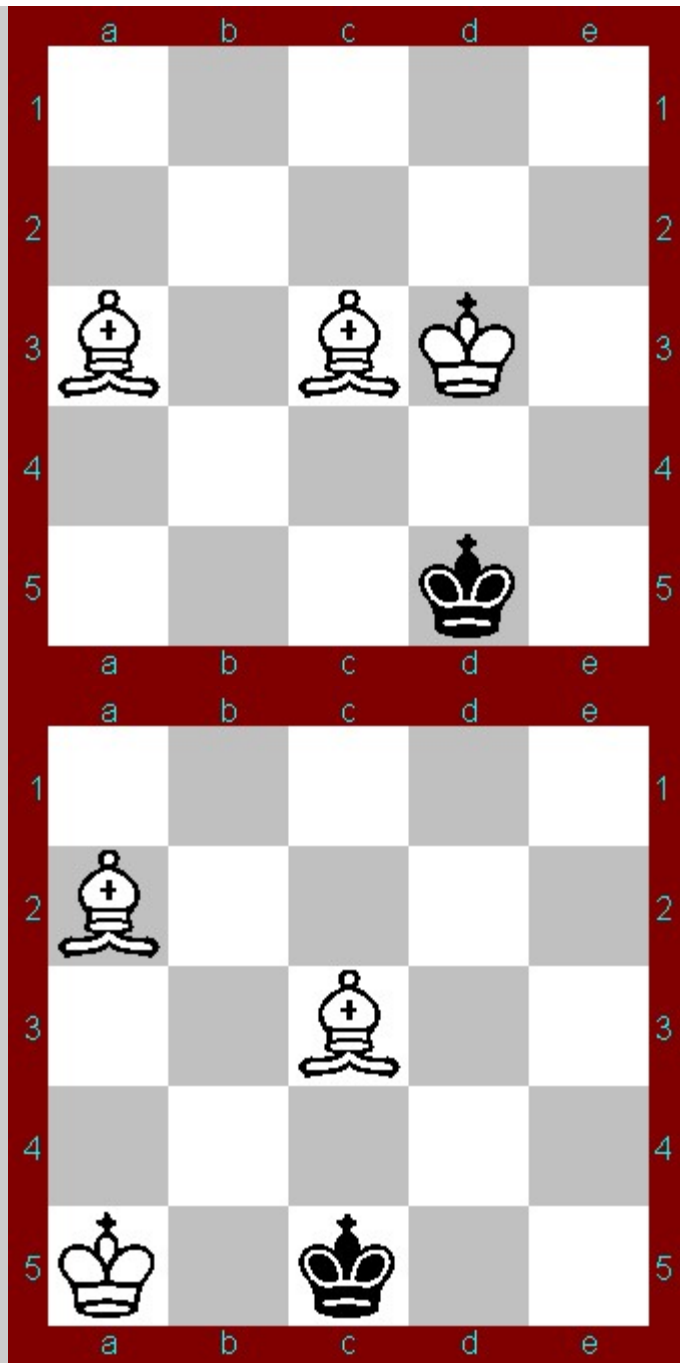
Knight versus Knight

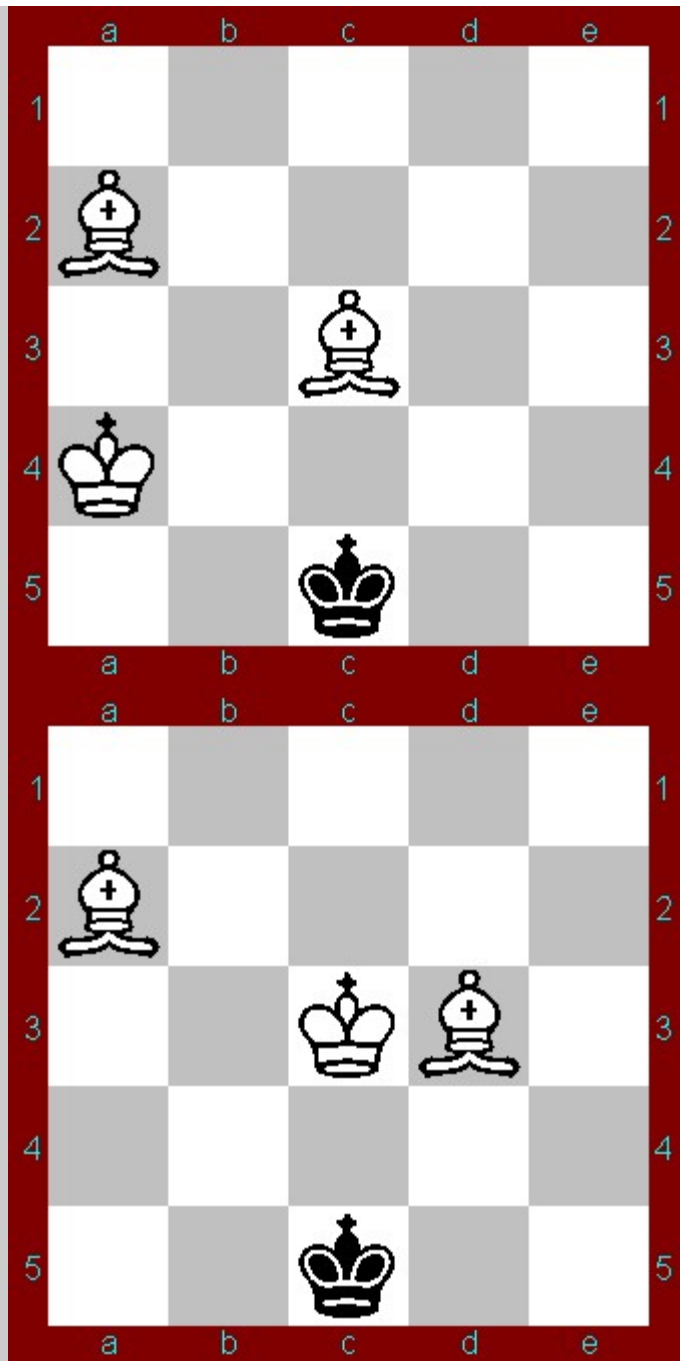


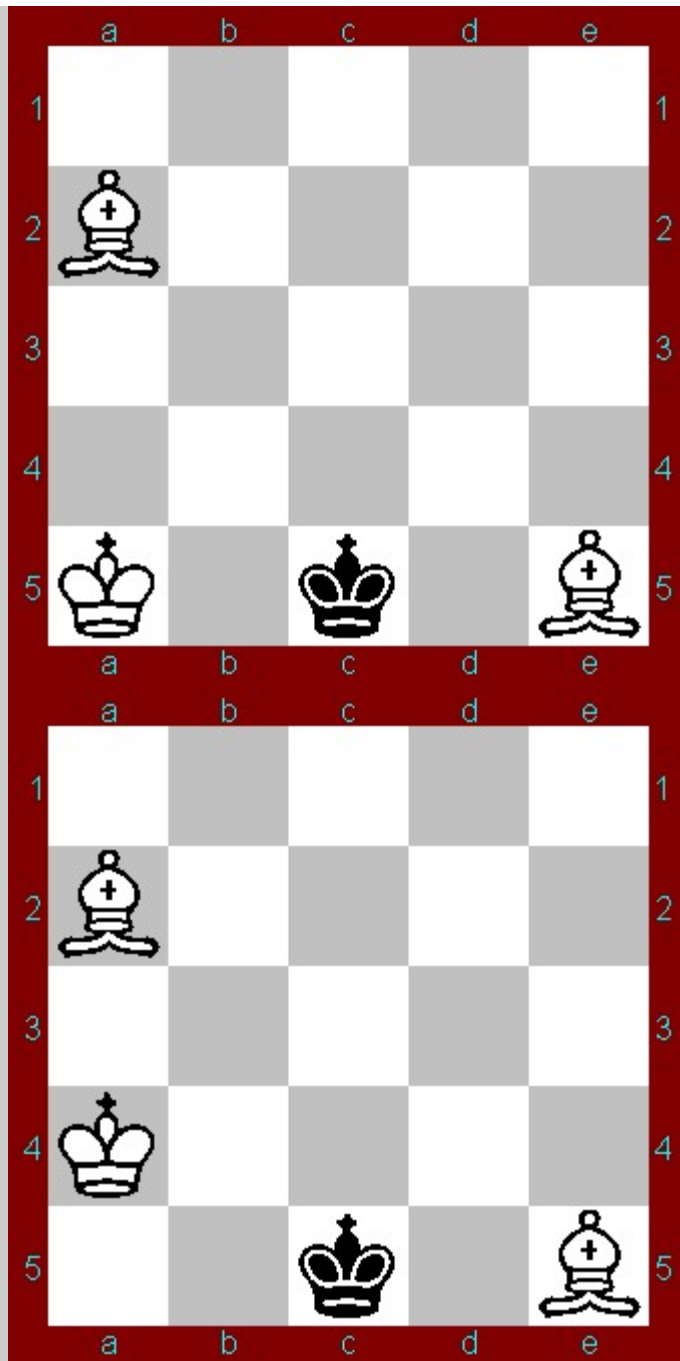
Stalemate with Bishop and Bishop



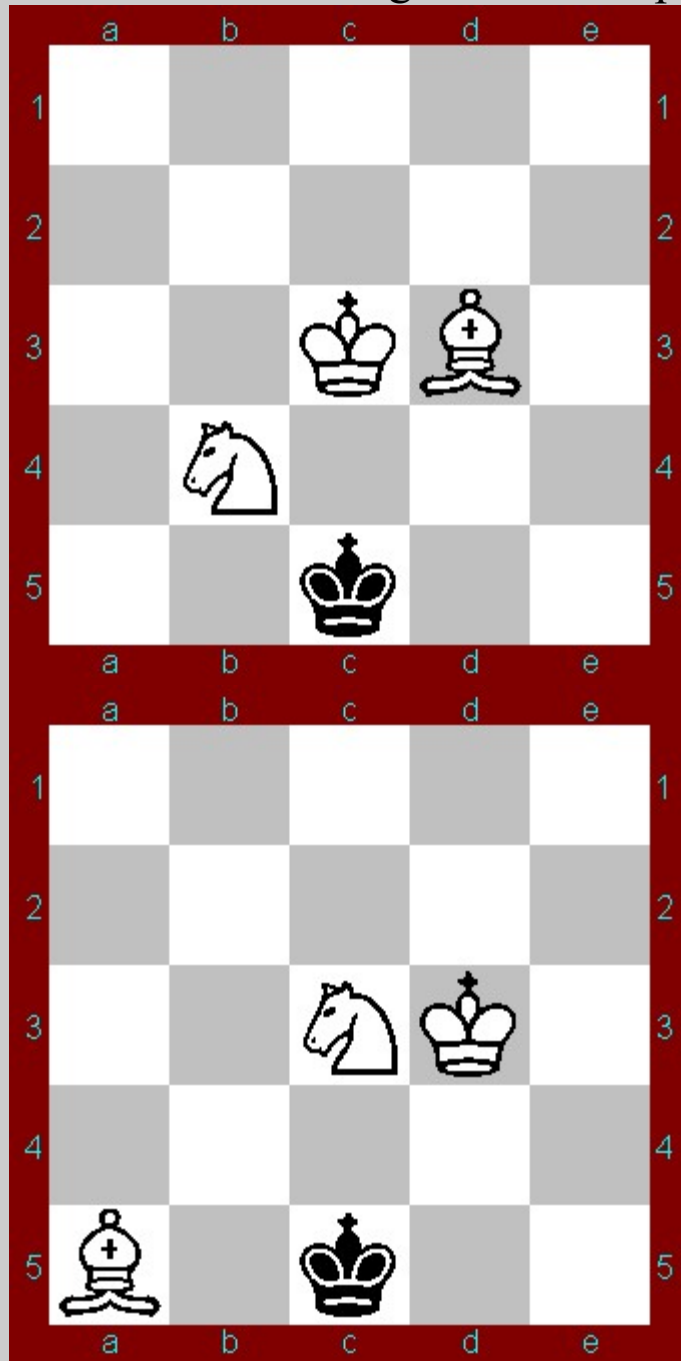


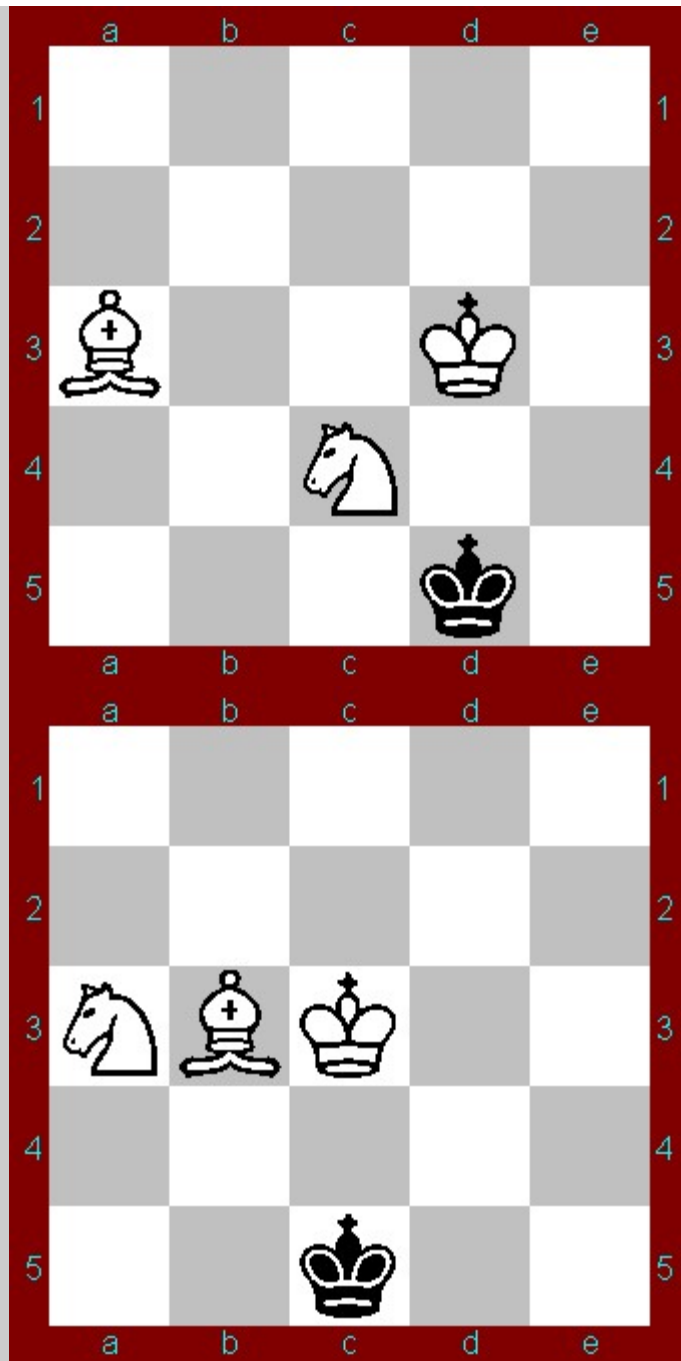


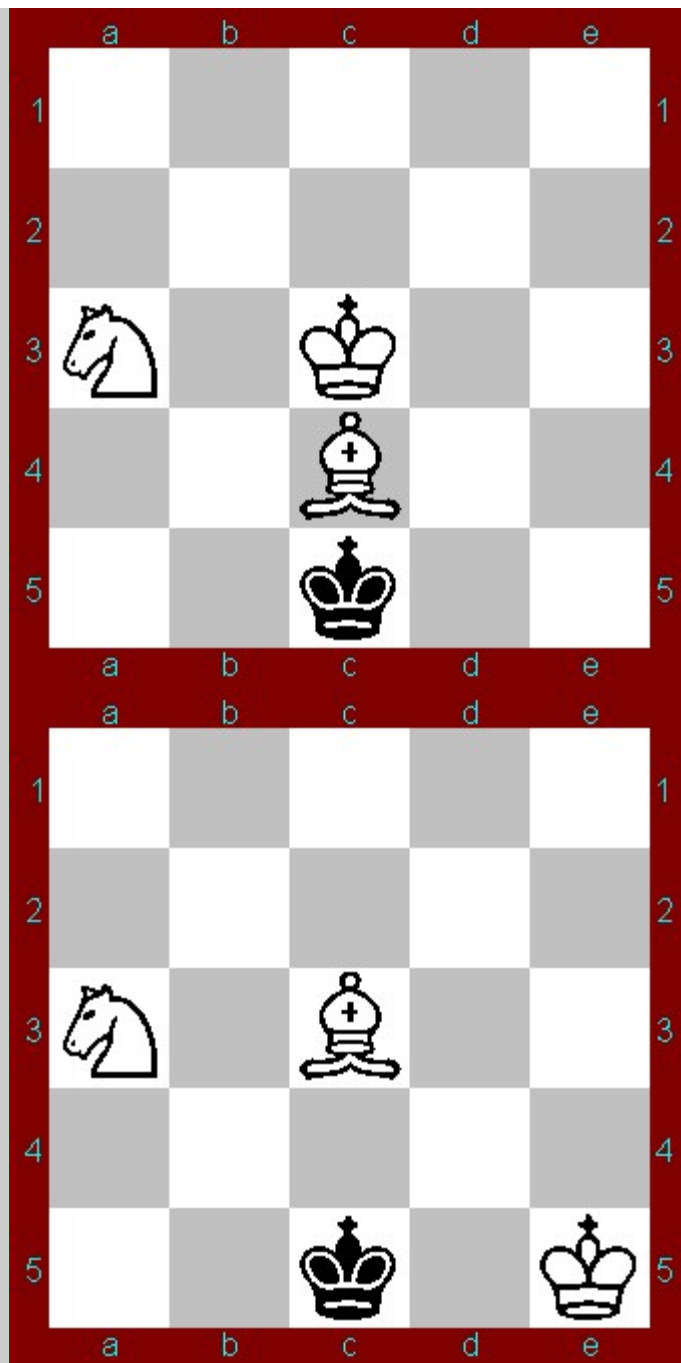


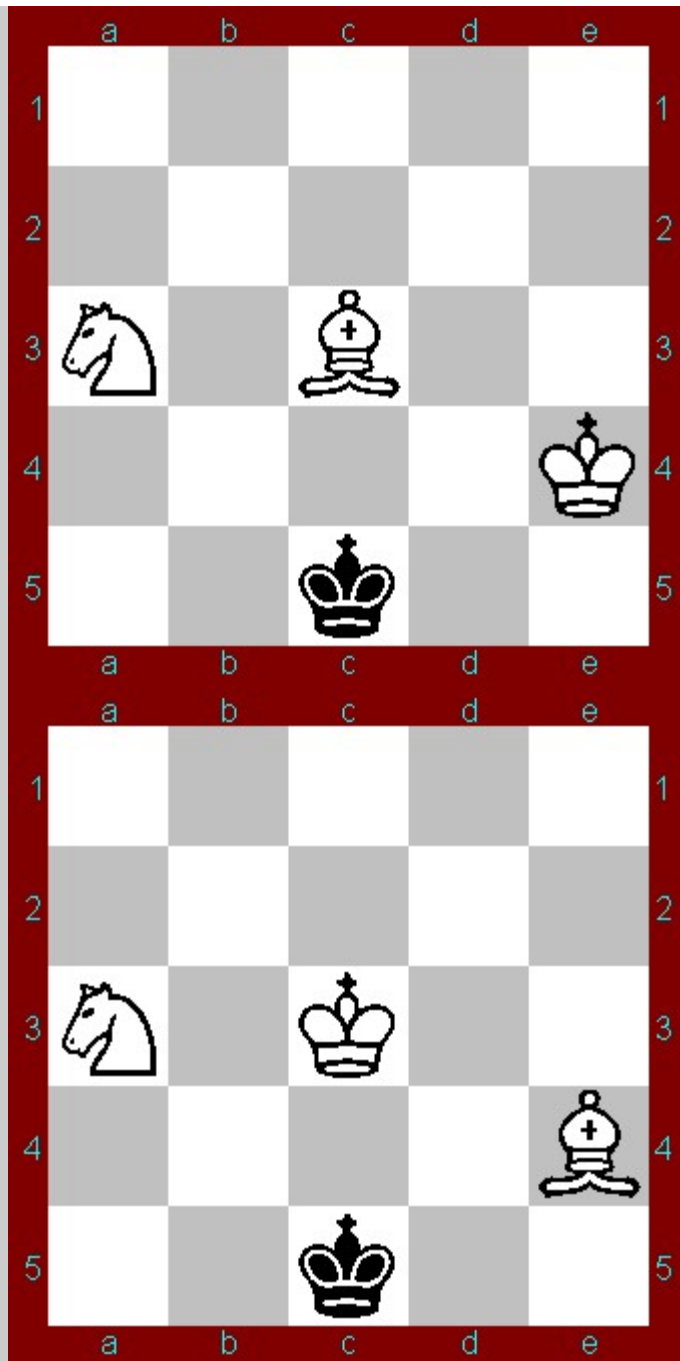


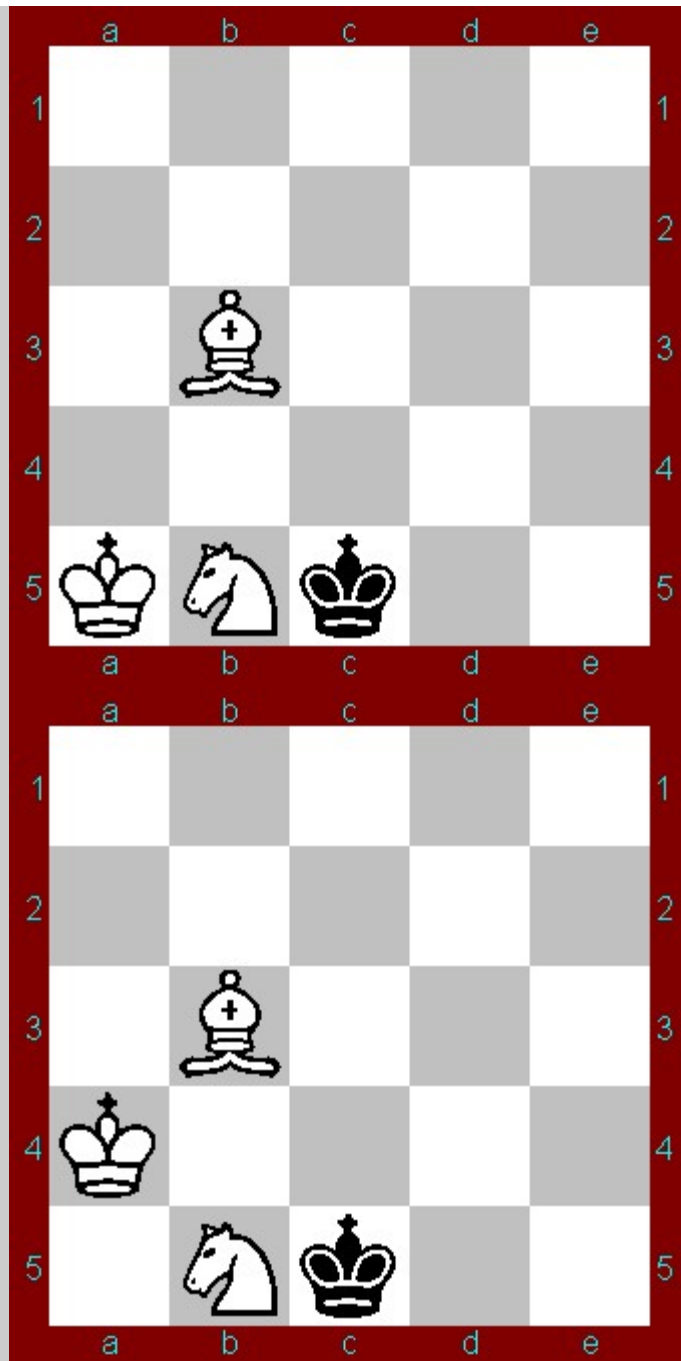
Stalemate with Knight and Bishop

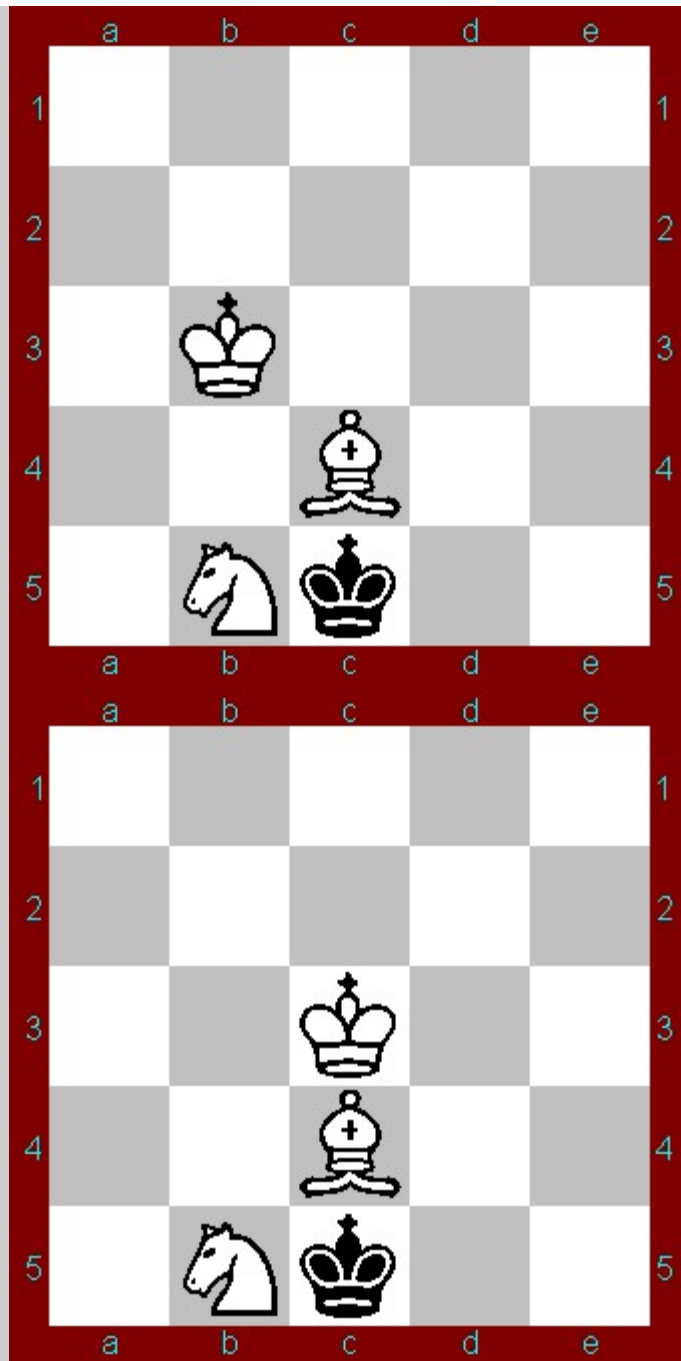


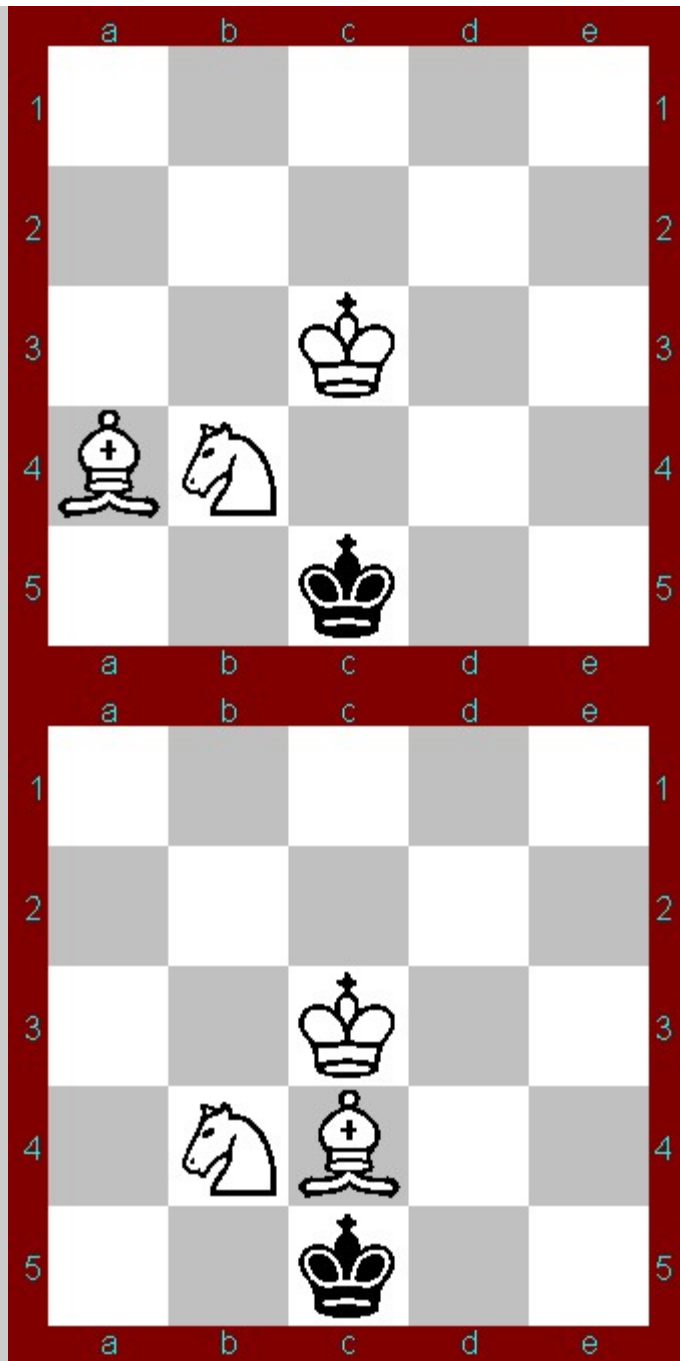


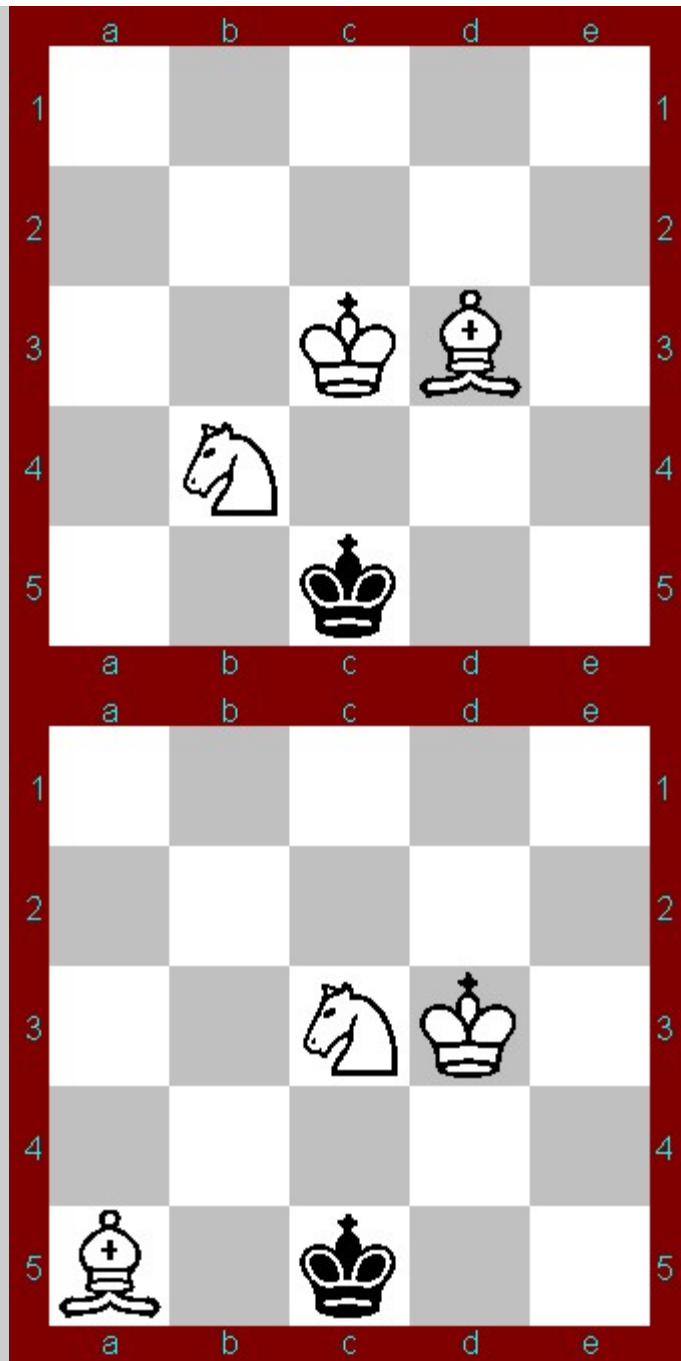


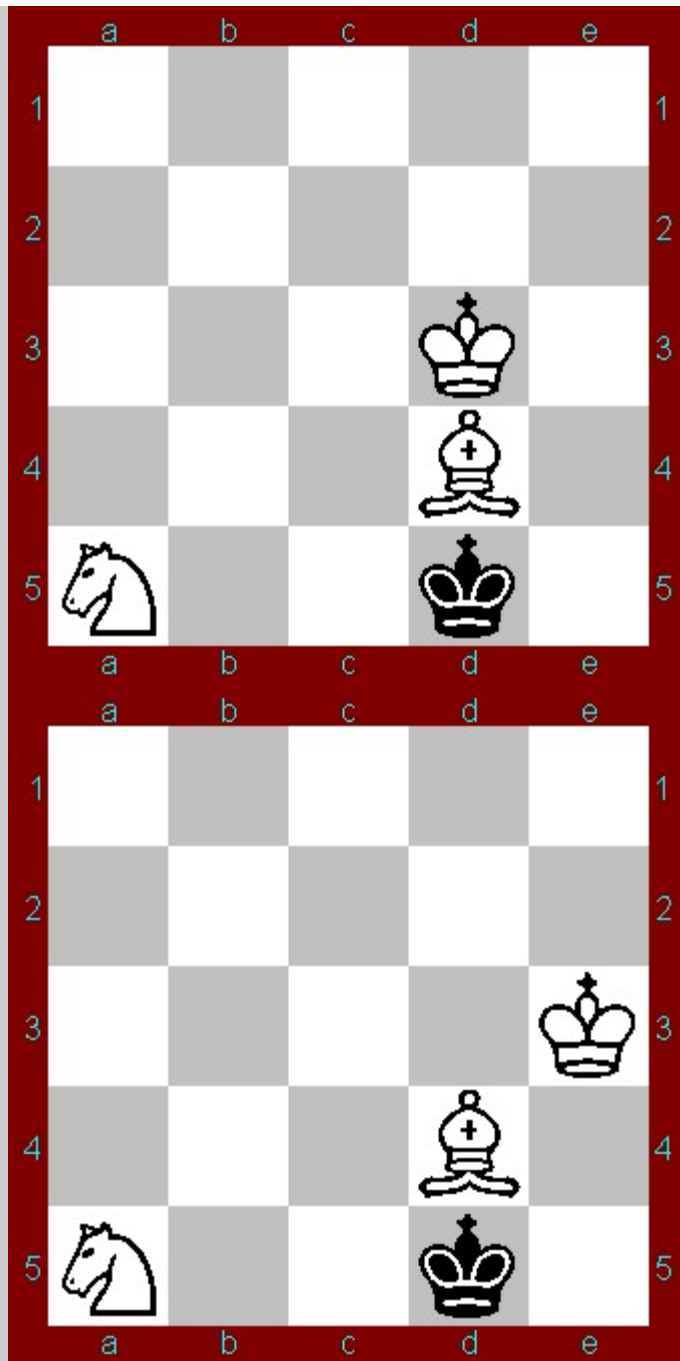


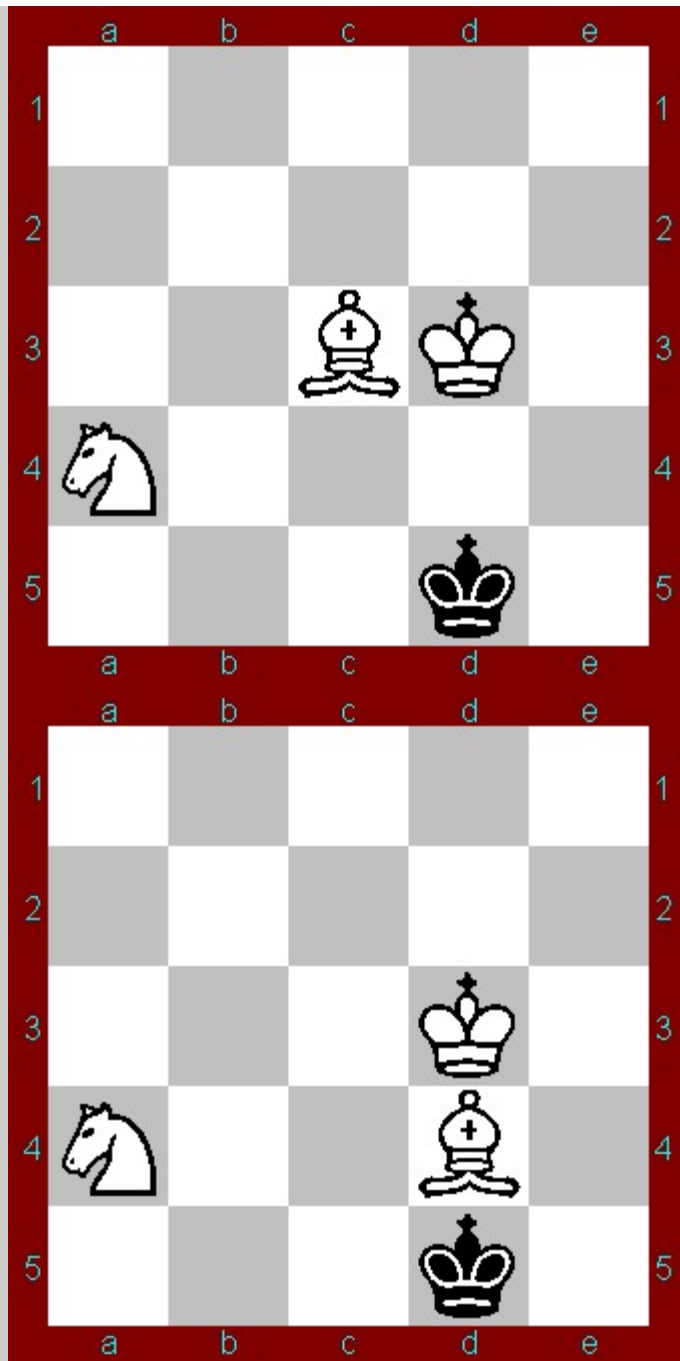


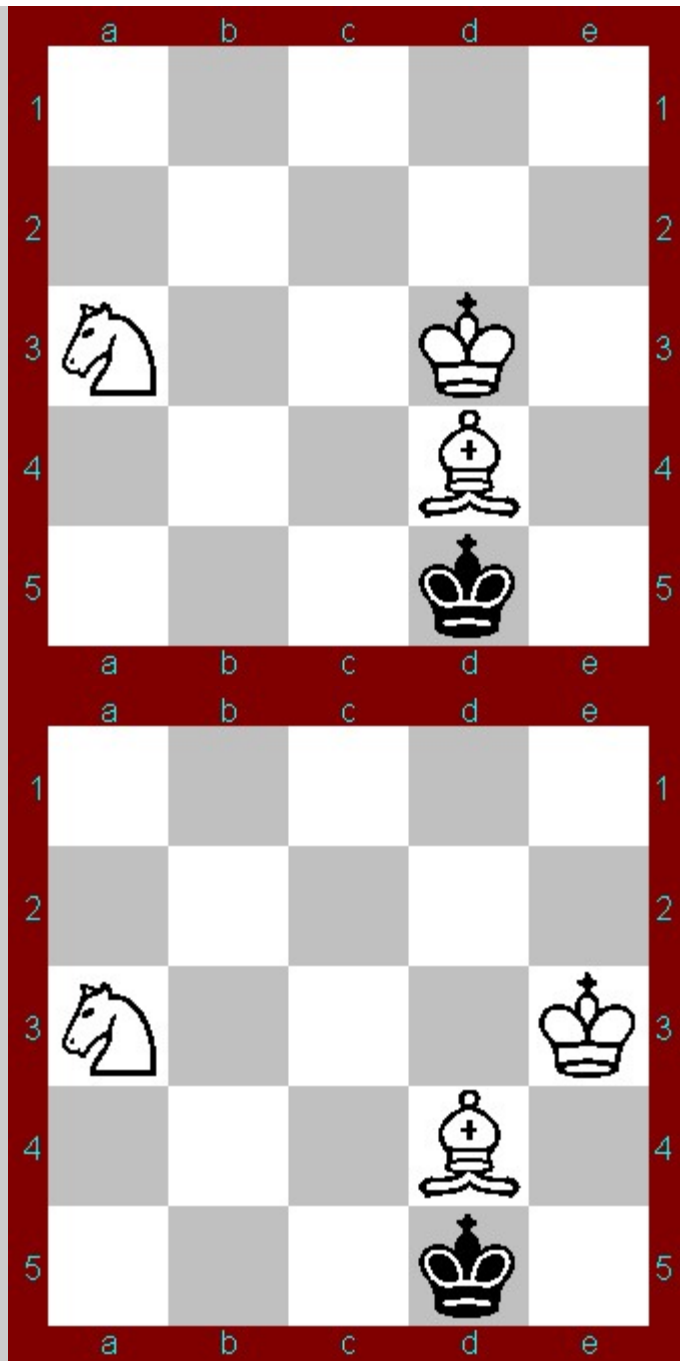


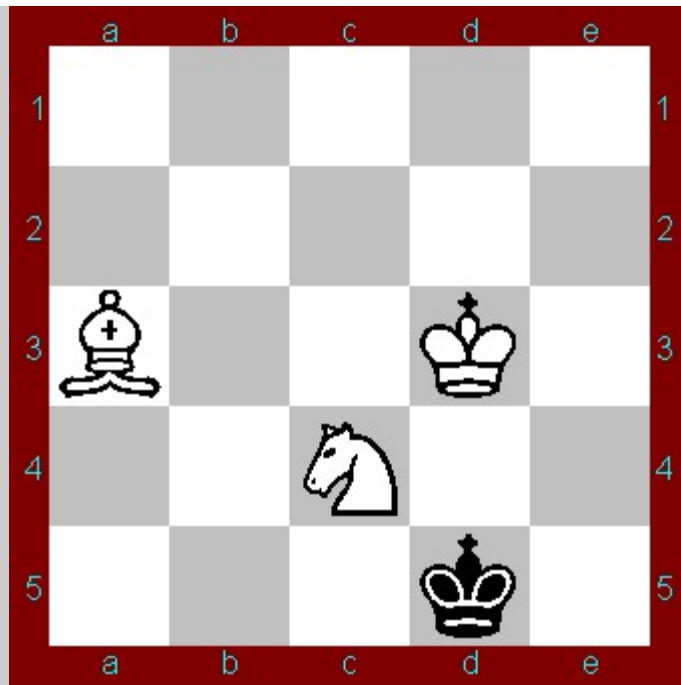




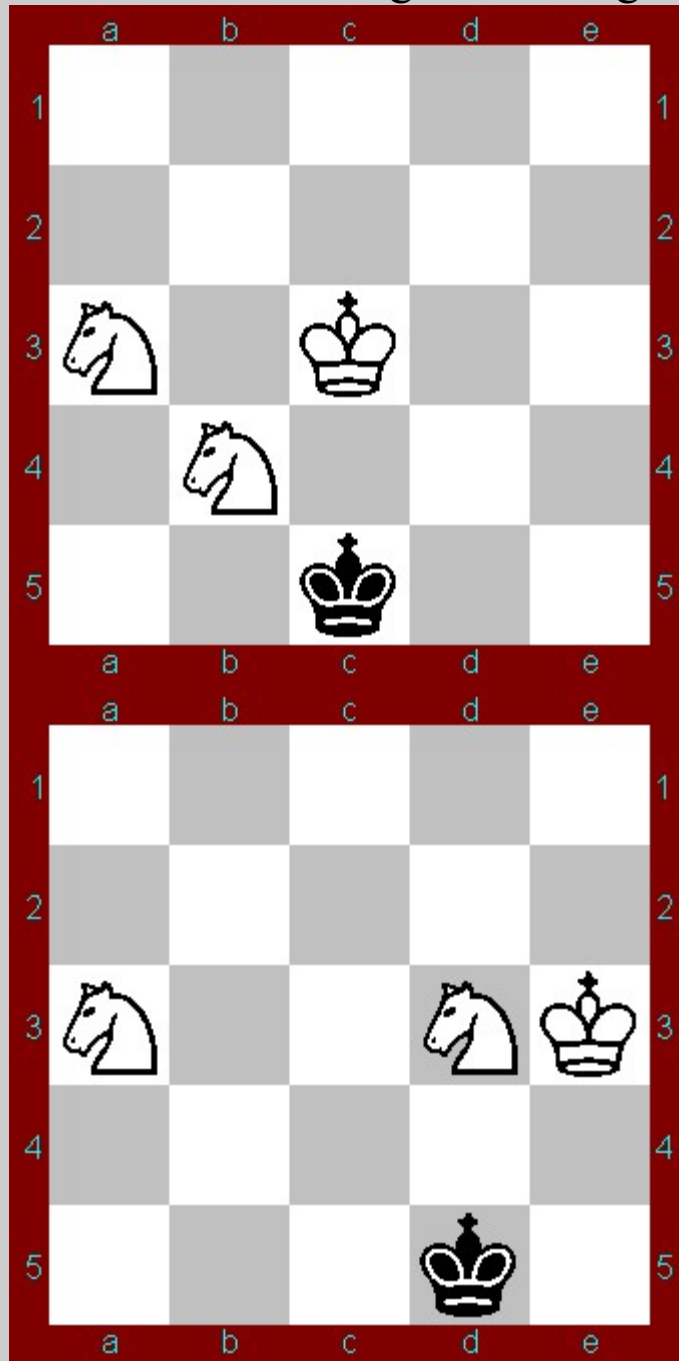


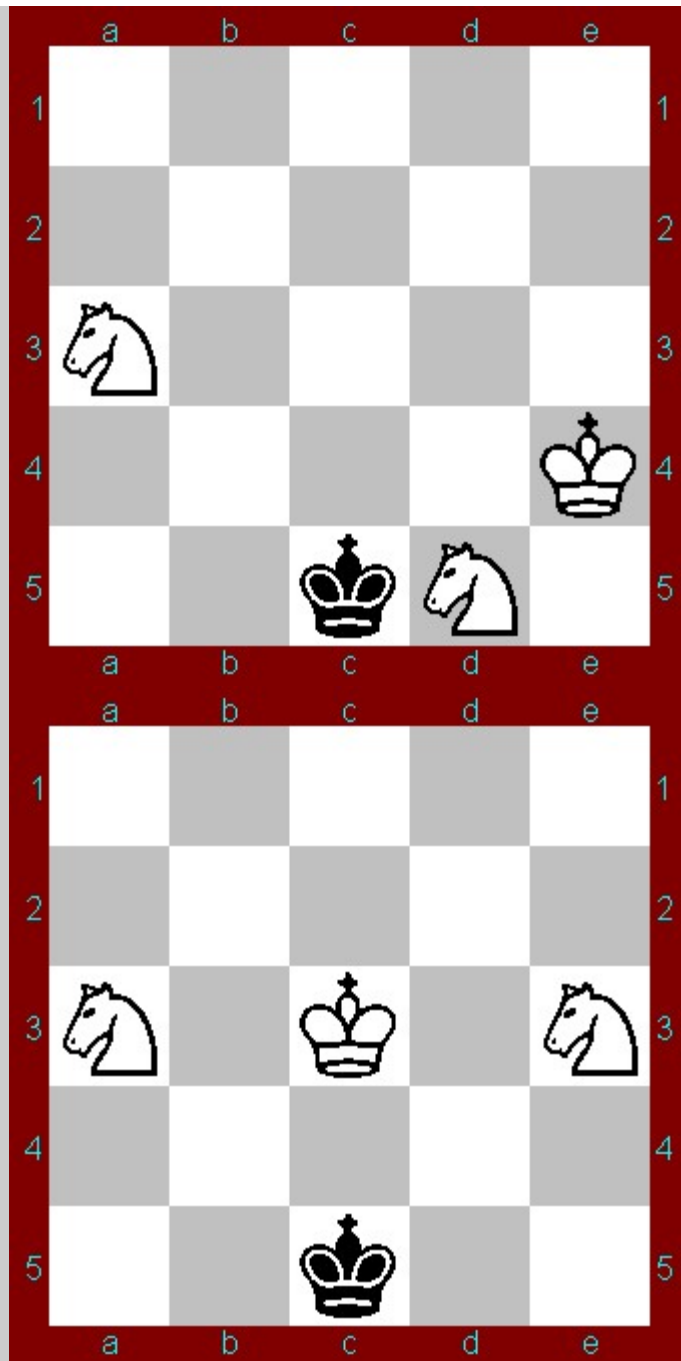


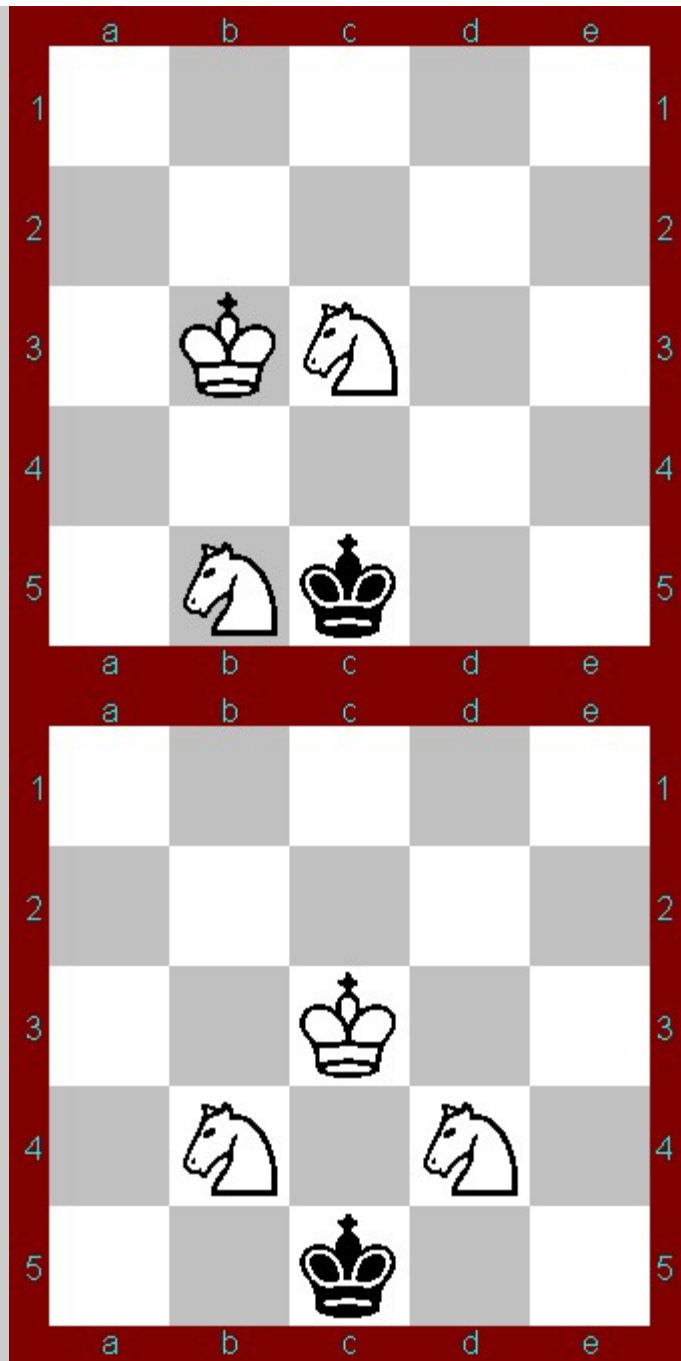


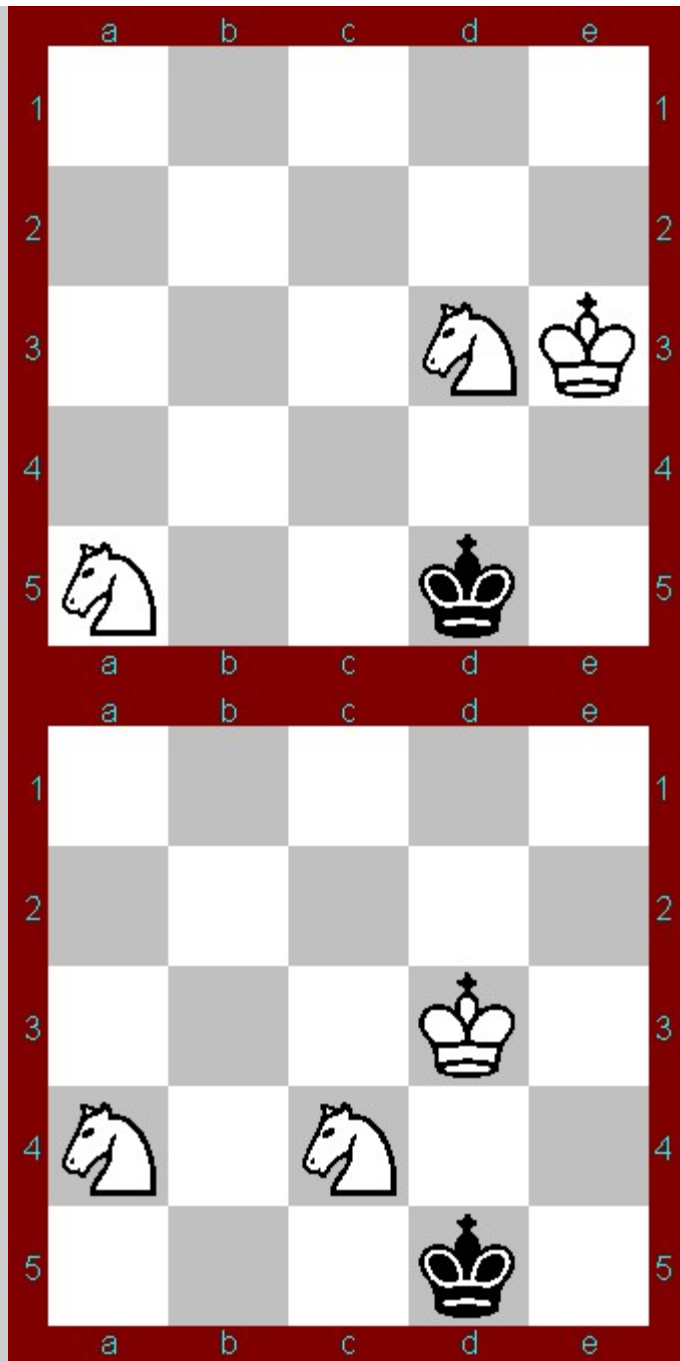


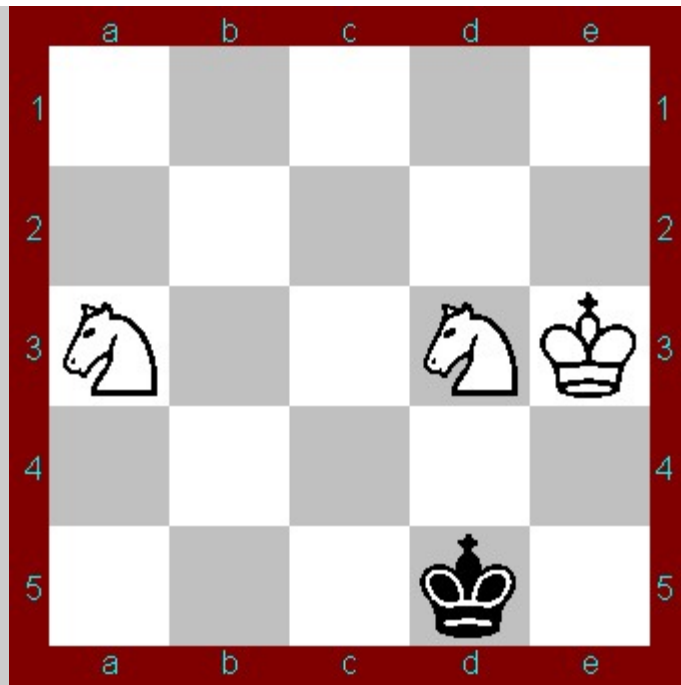
Stalemate with Knight and Knight



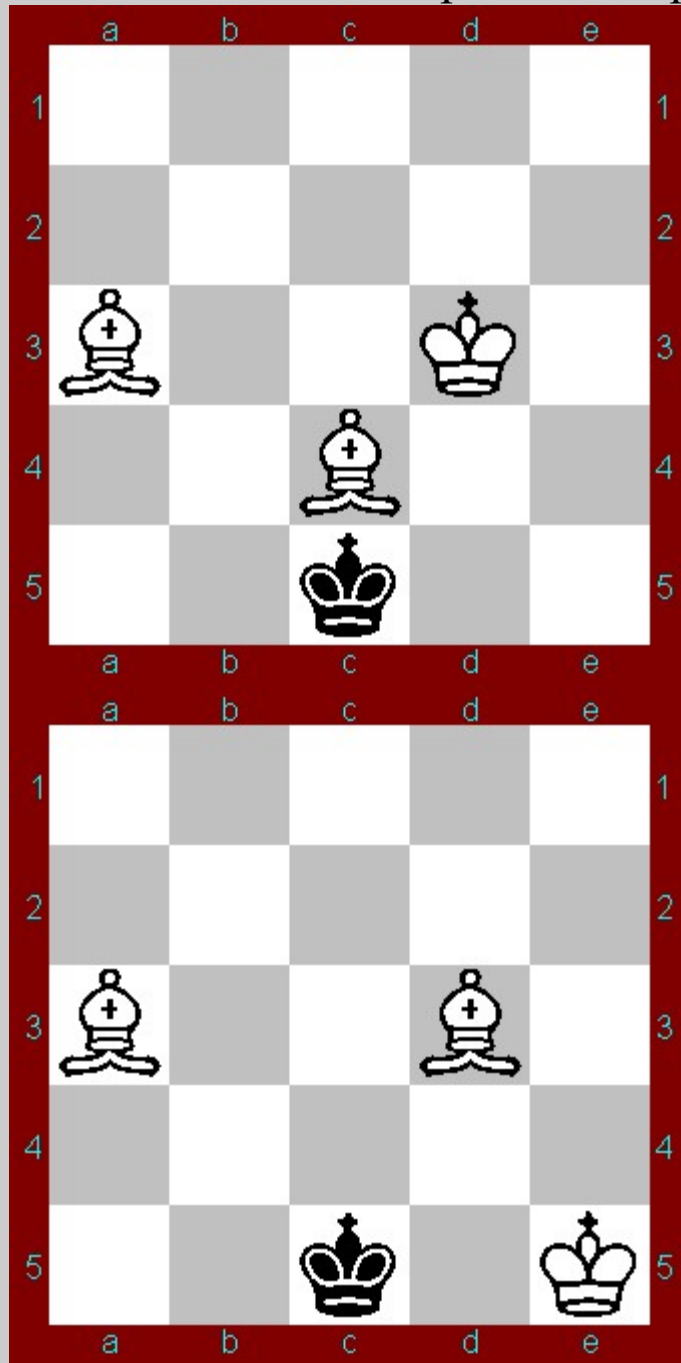


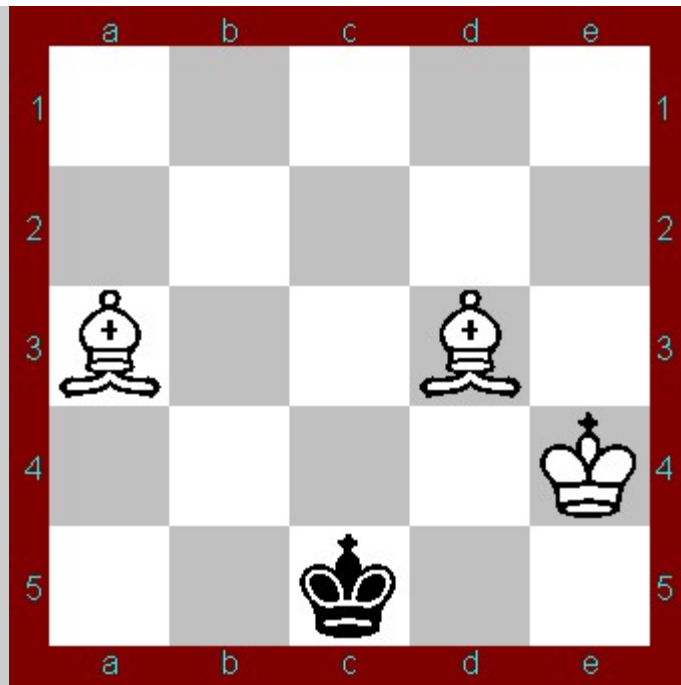




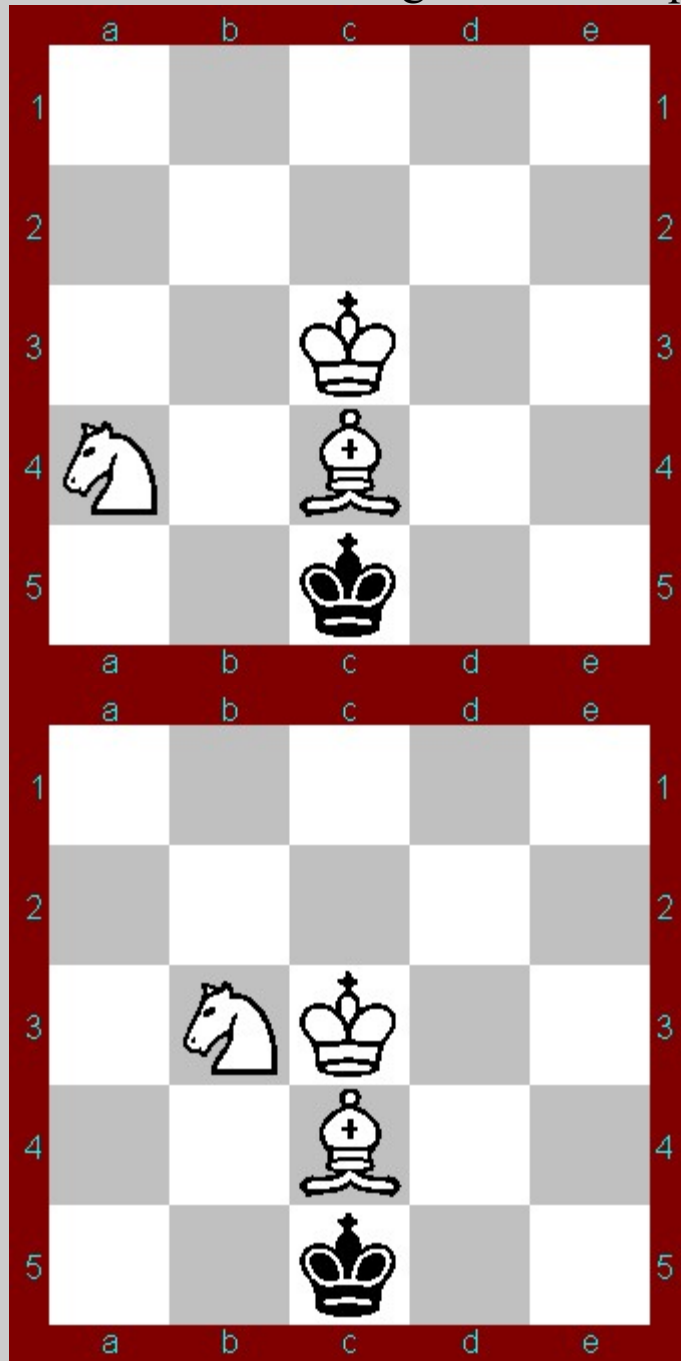


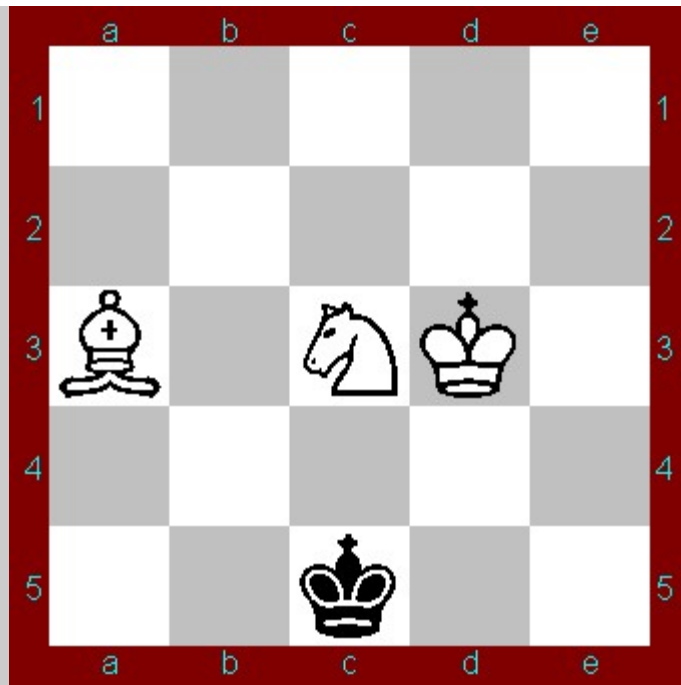
Checkmate with Bishop and Bishop





Checkmate with Knight and Bishop





Checkmate with Knight and Knight (South)

